

(2 : 1)

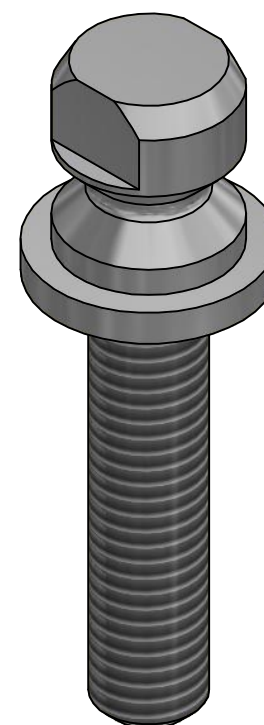
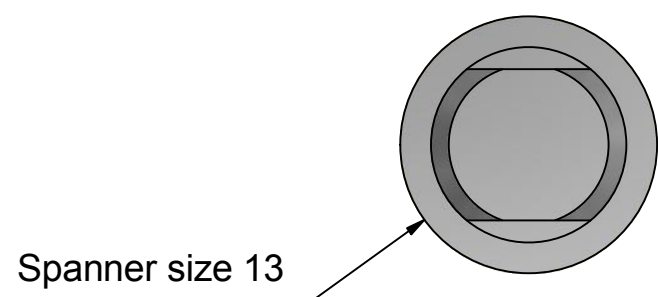


Table			
Item no.	Material	Treatment	L=mm
932020	AISI304		35
932034	AISI304		30
932035	AISI304		25
932054	Steel	Zinc plated, Chromated yellow	30
932055	Steel	Zinc plated, Chromated yellow	25

See table

Date
191127/HHDescription
Item no.
Fixing screw f. Aluminum profile (PH-400)

ROCA®