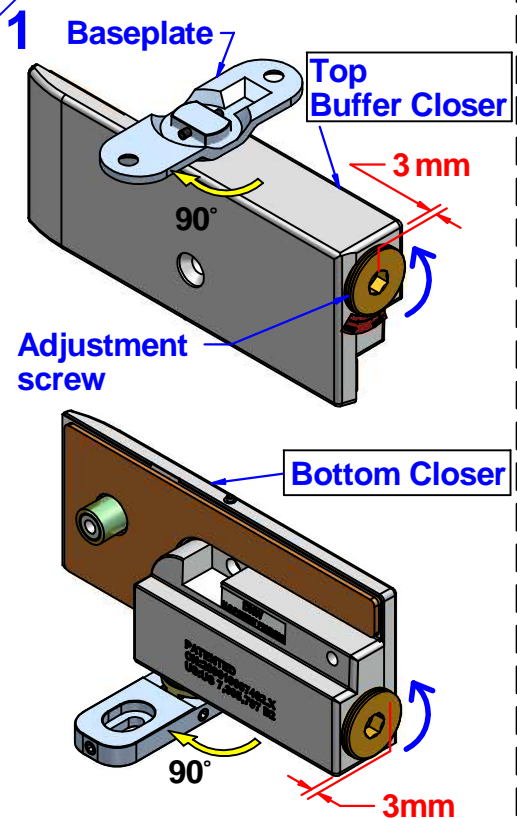


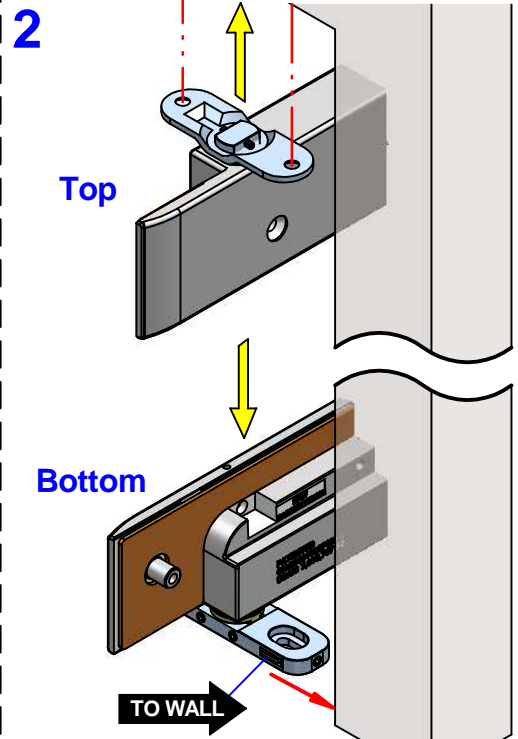
Hydraulic Door Closer For Glass Door Installation Instruction

(Adjustable Base Plate)

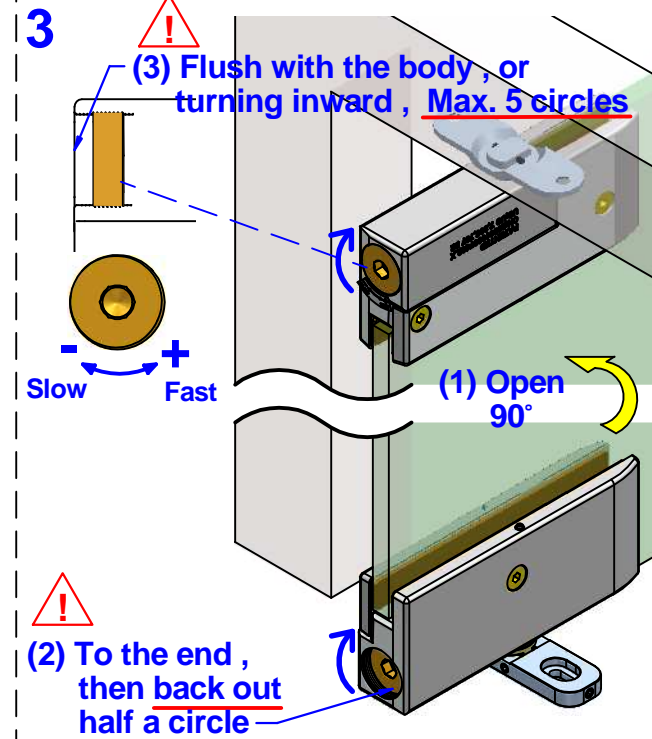
2016/01/13 V5



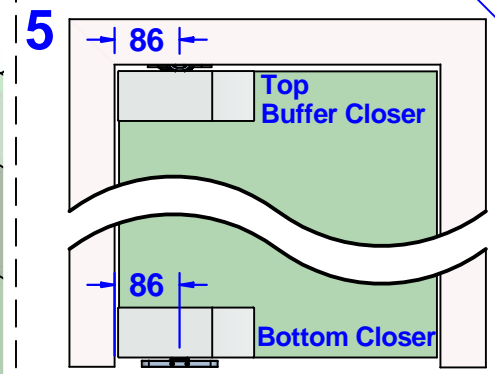
1. Loosen the adjustment screw 3mm out of closer body, but DO NOT take it out.
2. Turning both baseplates to 90 degree from closer body.



1. Follow template to drill the holes and fixing the baseplate.
2. Ensuring the bottom closer baseplate follow arrow sticker direction to face the wall.
3. Either end of top closer baseplate can face the wall.

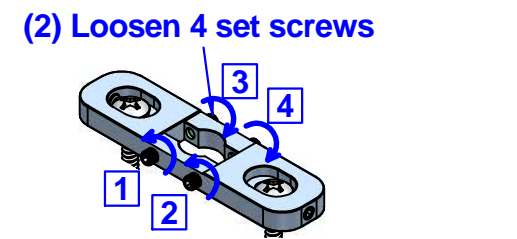


1. Put the glass to the closers.
2. MUST open the door to 90° or over 90° before adjustment, otherwise damage may occur.
3. Turning clockwise the bottom closer adjustment screw inwardly to the end, then back out half a circle.
4. Turning clockwise the top closer adjustment screw to be flush with closer body, it is the fastest closing speed, turning clockwise to make it slower, max. 5 circles inward, otherwise damage may occur.

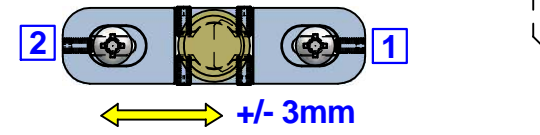


1. For Indoor Use
2. Patented in many countries
3. Double Action Door
4. Adjustable Closing Speed
5. With 90° Hold Open
6. Max. Door Width 1000mm(40")
Max. Door Weight 80Kgs(176lbs)
7. Glass Thickness : 10~12mm
Remark : (3/8"~1/2")
For 8mm Glass Please Specified Upon Ordering

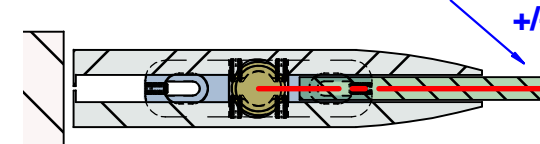
4 How to adjust : (1) Finishing baseplate & tighten 2 set screws



Only if the door can not close at 0° or line up with side panel, adjustment will be required.



(3) Push glass to ideal 0° position and holding the glass



(4) Tighten 4 set screws in turns

