

Variations:

Max length:		Voltage input:	
L1	L2	12 V	24 V
28	78	531013	531014
53	103	531023	531024
78	128	531033	531034

Limited warranty

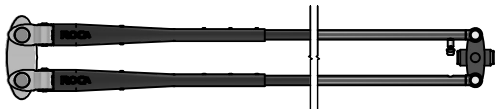
- ROCA warrants the wiper motors to be free from defective material and workmanship for a period of 3 years from the date of purchase.
- This warranty does not apply to failure or damage caused by improper installation, misuse, lightning strike or damage from a power surge.
- If failure occurs during this period, return it to your dealer for repair or replacement.

Current diagram:	12 V	24 V
No load	< 6 A	< 3 A
Normal running	< 10 A	< 5 A
Stall	< 40 A	< 20 A
Fuse	40 A	20 A

Wiper arms and blades:



Pantograph
536330 / 536335 EP
538330 / 538335 Black



Pantograph
536347 EP
538347 Black



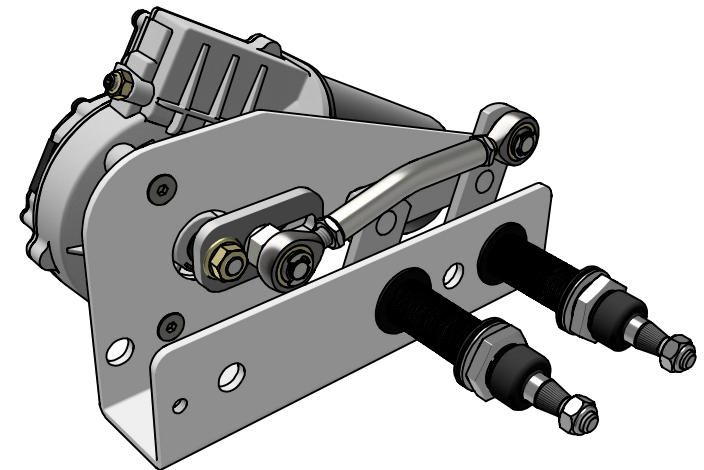
Blade (28"- 40")
520828 - 40

230302/LW

WIPER MOTOR | W50

Installation instructions

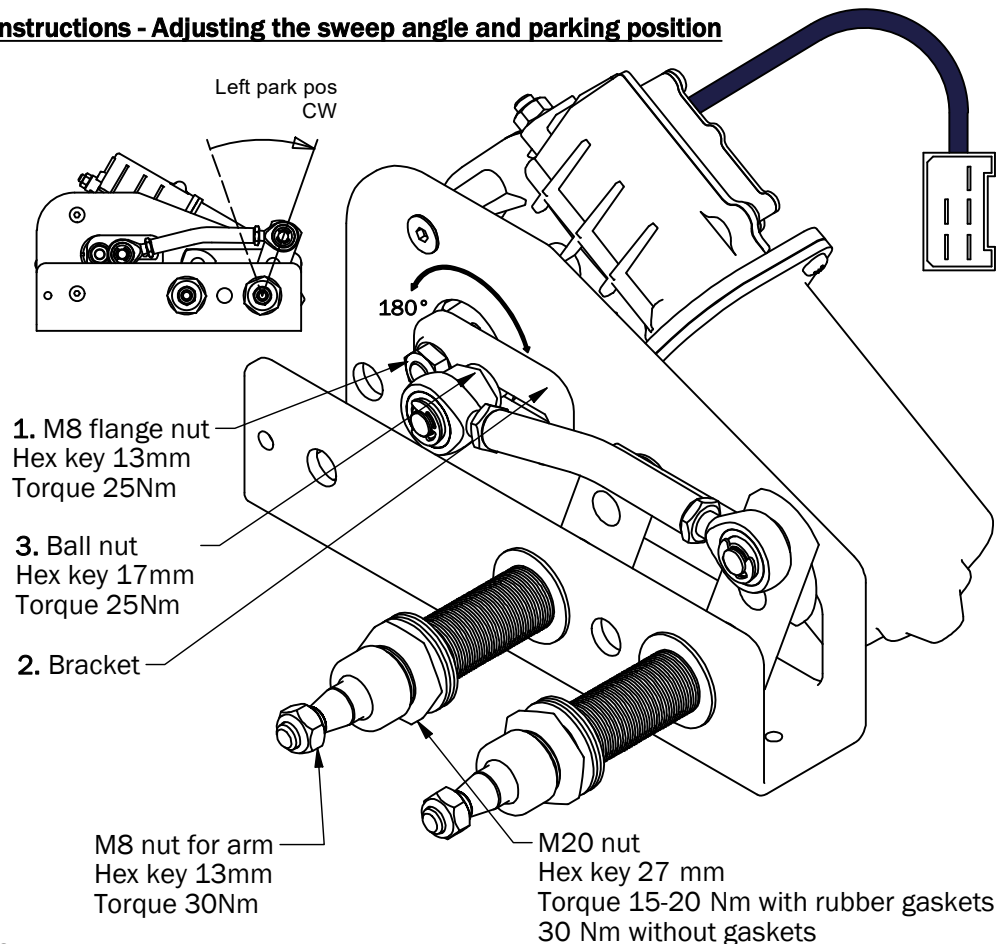
Before installation please read these instructions.



- 2 Speed, self-parking
- Heavy duty motor, 50 Nm
- Wipershaft in stainless steel
- Various sweep angle: 45 - 110°
- Dynamic park circuit
- Internal thermoswitch
- Insulated ground
- EMC protected
- Powers up to 1 100 mm / 1 100 mm Arm/blade combinations



Instructions - Adjusting the sweep angle and parking position



Changing the parking position.

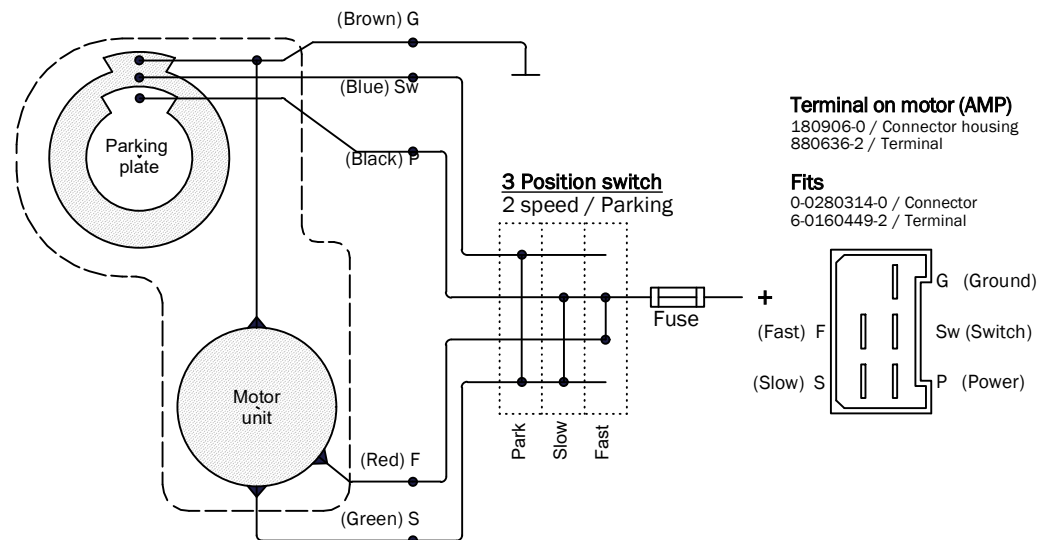
Before the parking position is changed, make sure that the wiper motor is in its parked position (Default is to the left). This is easiest done by turning on and off the power to the wiper motor. For safety, turn off and keep the battery main switch turned off during any operation inside of the wiper motor.

- Loosen the nut (1).
- Snap off the bracket from the shaft on the motor (2).
- Rotate the bracket 180°.
- Assemble the bracket and tighten the nut firmly.

Change of wiped angle.

The sweep angle can be set at any point between 45° and 110°. (Default is 45°). Before you change the sweep angle, make sure that the wiper motor is in its parked position. This is easiest done by turning on and off the power to the wiper motor. For safety, turn off and keep the battery main switch turned off during any operation inside of the wiper motor.

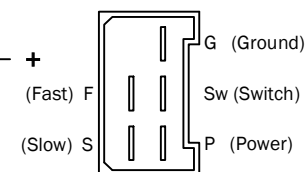
- Loosen the nut (3).
- Move the nut (3) to desired position in the slot by changing the position of the wiper arm.
- Tighten the nut (3) firmly.



Alt. 1 (3 pos.switch)

Terminal on motor (AMP)
180906-0 / Connector housing
880636-2 / Terminal

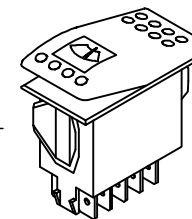
Fits
0-0280314-0 / Connector
6-0160449-2 / Terminal



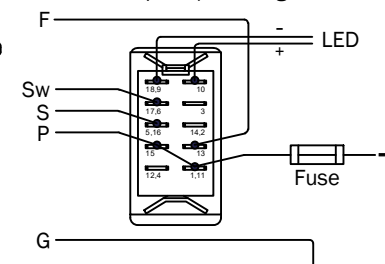
Alt. 2 (ROCA switch)

Actuator
466026

Switch
466221 / 12V
466222 / 24V



ROCA switch
2 speed / Parking



Alt. 3 (Alternative switch)

