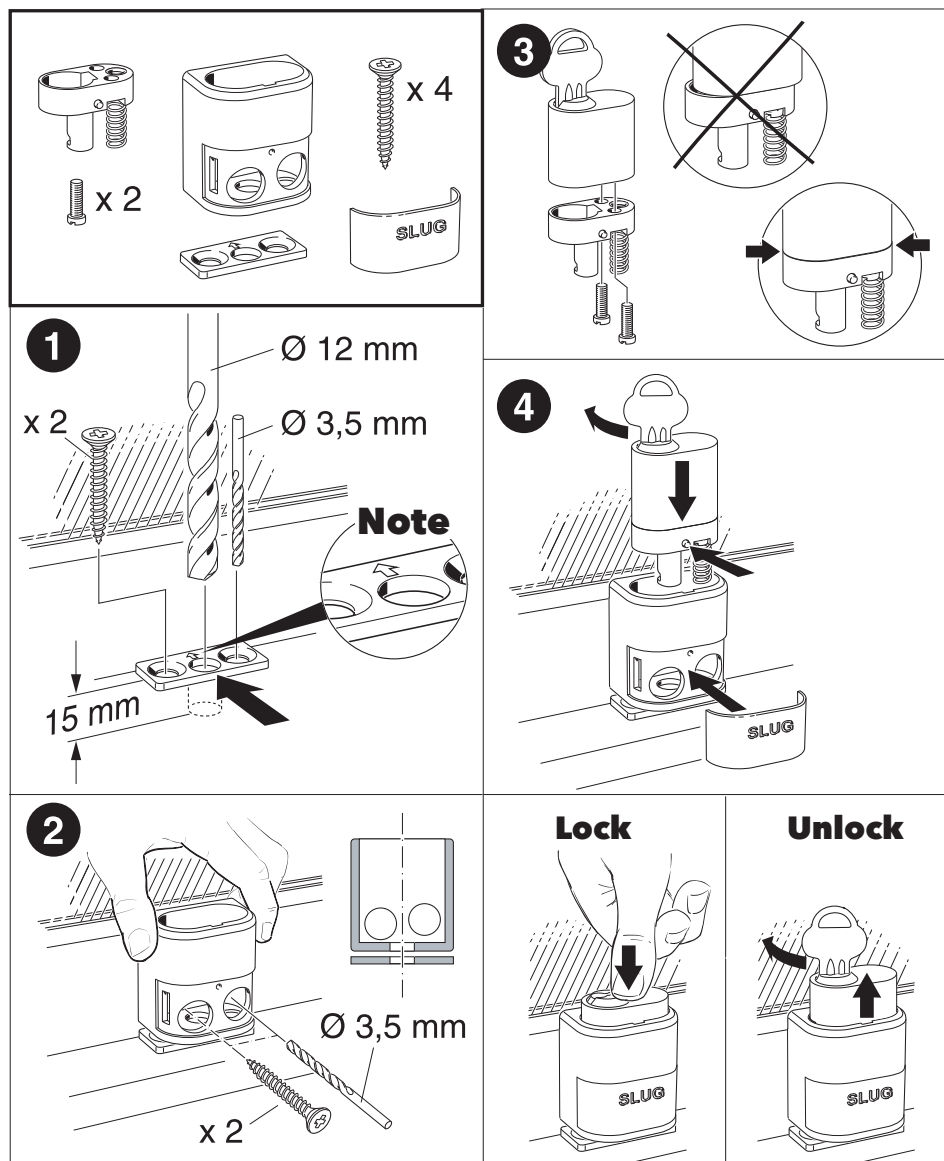


Installation guide, SLUG 2020, outwards



- 1.** Place the strike plate with the arrow facing the window. Mark the holes. Use a 12 mm drill for the hole for the locking pin, 15 mm deep. Use a 3,5 mm drill for the screws. (Mount)
- 2.** Place the cylinder housing on the window, right above the strike plate. Mark the holes and use a 3,5 mm drill. (Mount)
- 3.** Attach the end-piece to the push button cylinder.
- 4.** Push down the fully assembled push button cylinder lock by turning the key to the right while pushing the stop pin. The cylinder must be properly placed - note the position of the locking pin and make sure it slides into the socket. Attach the plastic cover.

How to use

Lock with push button cylinder:
Open by turning the key to the right
Remove the key and push down the cylinder to lock

Disassembly

The cylinder can be dismantled when unlocked: Remove the plastic cover from the cylinder housing and use a paper clip to push the stop pin in the small hole underneath it.

Tips

Make sure that the screw holes are not placed in a way that the glass may be damaged.
Use recommended lubricant to prevent the lock from grinding or seizing up.
Note: Some windows or mountings call for a 2 - 5 mm distance between the cylinder housing and the strike plate.

